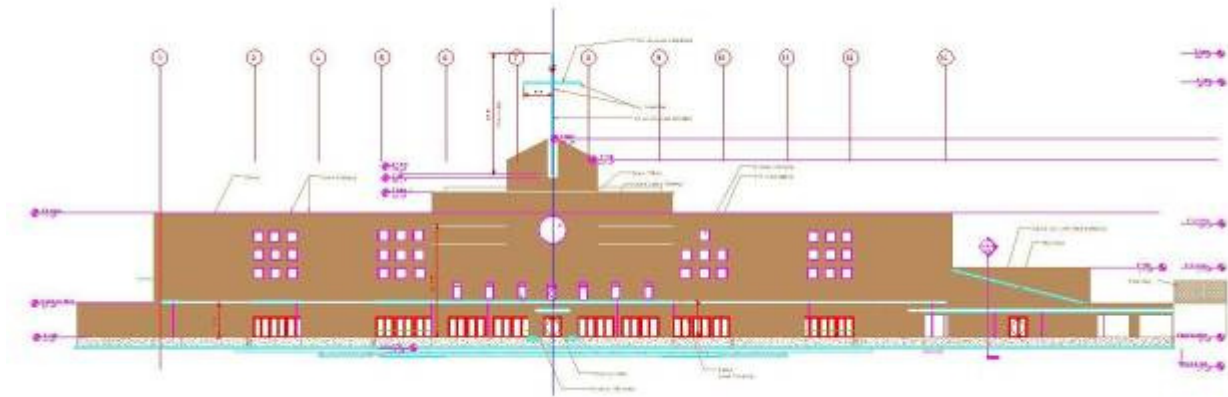


Monument of Faith Evangelical Church



Monument of Faith Evangelical Church Chicago, Illinois

This 90,000 square foot church located on the south side of Chicago boasts a 350 foot radiused masonry facade 50 feet tall with a distinctive center parapet surrounding a 40' tall cross. The front of the building contains a grade level entry with narthex along the whole curve, and three vomitorium paths to the sanctuary. From these entrances, seating is arranged along the same radius and drops in elevation to the raised pulpit. Above a ring of function rooms and the narthex is additional sloped seating rising to the wall of the front facade.

The roof structure is steel framed with two 20 foot deep main steel trusses allowing for a 200 foot by 240 foot column free assembly area. The floor of the upper level seating is a structural steel frame with concrete slab on composite steel deck over steel beams and girders with composite studs. The exterior walls are precast on three sides with the front facade of brick masonry with CMU backup.

The 17 foot masonry parapet, the 40 foot tall steel cross and the 20 foot deep steel trusses presented design challenges which were creatively met.

Architect: Gazso Design Inc.

